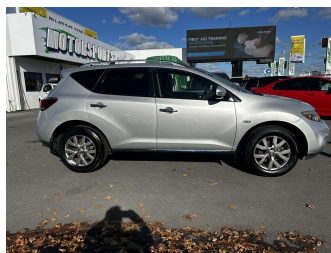



2013 Nissan Murano



Purchase Price **\$16,990**
Includes GST, Registration & Licensing

Indicative repayments
\$109.47 per week*
Based on a 48 month term & no deposit.
Total repayments (208) = **\$22,770.42**



Gain peace of mind with
Mechanical Breakdown
Insurance. **Ask us how.**



Top features

- » 18" Alloys
- » 2 Keys
- » Air Conditioning
- » CD Player
- » Central Locking
- » Child seat anchor poin...
- » Climate Control
- » Digital Display
- » Electric Mirrors
- » Electric Mirrors (Retr...
- » Fog Lights
- » Keyless Entry
- » Push Button Start
- » Rear Wiper
- » Remote Central Locking
- » Reversing Camera
- » Steering Wheel Functio...
- » Tinted Windows

Body Style
5 door, SUV

Odometer
123,000 km

Engine
2500 cc, Internal Combustion


Fuel Type
Petrol

Transmission
Auto

Wheels
18", Factory Alloys

VIN
7AT0DH74X24022544

Interior
Black, Cloth

Safety

Based on 2023 UCSR rating for 09-15 models

Reg No.
-

Ext Colour
Silver

History
-

Seats
5 seats, Leather

CO2 Emissions
-

Energy Economy
☆☆☆☆☆☆

Annual fuel cost not available

Energy Consumption unknown.

Stock ID: 5108



Motorsports Limited | Phone 07 347 1599 | Email stacey@motorsports.co.nz
5-7 Fairy Springs Road, Fairy Springs, Rotorua 3015, New Zealand
www.motorsports.co.nz

* Motorsports Limited is not a lender nor a financial adviser. Any amounts displayed should not be seen as an offer of finance or taken as financial advice. The interest rate, fees and loan term used in this calculation may not actually represent those available from lenders. Actual interest rates, fees and loan terms will vary per lender and are typically based on an assessment of your credit risk and responsible lending criteria. Any repayment amounts displayed are indicative only and have been calculated using several other indicative inputs. The interest rate used in this calculation is an arbitrary 13.95%, however exact interest rates vary per lender. The term of the loan used in this calculation is 48 month. Exact terms available vary per lender although options typically include 6, 12, 18, 24, 36, 48 and 60 months. This calculation also includes a typical mandatory fee charged by lenders. This is a one-off establishment fee of \$385.80. Typically, this fee can be paid upfront or, as in this calculation, be capitalised over the contract term, ie. included in the loan amount. This fee can vary per lender and other non-mandatory fees and charges may also apply. The total amount of repayments has been calculated by multiplying 208 weekly repayments (based on a 48 month term) by the weekly repayment amount of \$109.47 which equals \$22,770.42. This calculator does not consider any of your own personal circumstances and we strongly suggest you seek budgeting advice prior to committing to any loan contract. Responsible lending criteria and lender terms and conditions will likely apply to any finalised loan contract. Proof of security and/or vehicle insurance may also be required before proceeding.