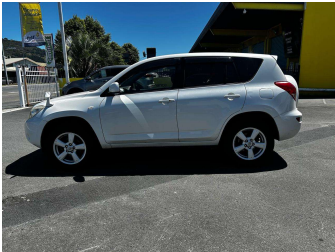
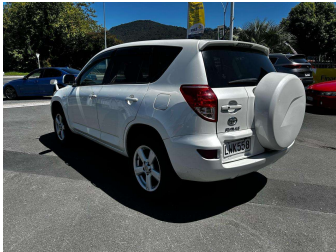
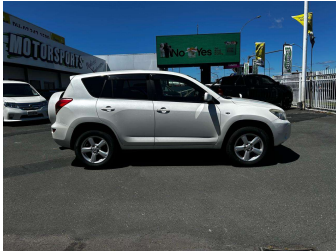


# 2008 Toyota Rav 4



Purchase Price

\$8,990

Includes GST, Registration & Licensing

Indicative repayments

\$60.25 per week\*

Based on a 48 month term & no deposit.  
Total repayments (208) = \$12,531.52

Gain peace of mind with  
Mechanical Breakdown  
Insurance. **Ask us how.**

Top features

» 2 Keys

» ABS Braking

» Air Bags

» Air Conditioning

» CD Player

» Central Locking

» Cruise Control

» Electric Mirrors

» Electric Mirrors (Retr...

» Push Button Start

» Rear Wiper

» Remote Central Locking

» Reversing Camera

» Tinted Windows

» Traction Control

Body Style

5 door, SUV

Odometer

193,000 km

Engine

2400 cc, Internal Combustion

Fuel Type

Petrol

Transmission

Auto

Wheels

16", Factory Alloys

VIN

7AT0H61XX15020914

Interior

Black, Cloth

Safety

Based on 2025 UCSR rating  
for 06-12 models

Reg No.

LWK558

Ext Colour

White

History

-

Seats

5 seats, Cloth

CO2 Emissions

★★★★☆  
209 grams/km

Energy Economy

★☆☆☆☆  
Annual fuel cost of \$3,530  
9L per 100km

Cost per year is an estimate based  
on petrol price of \$2.80 per litre and  
an average distance of 14000 km.  
Emissions and Energy Economy  
figures standardised to 3P WLTP.

Stock ID: 5171



Motorsports Limited | Phone 07 347 1599 | Email [stacey@motorsports.co.nz](mailto:stacey@motorsports.co.nz)  
5-7 Fairy Springs Road, Fairy Springs, Rotorua 3015, New Zealand  
[www.motorsports.co.nz](http://www.motorsports.co.nz)

\* Motorsports Limited is not a lender nor a financial adviser. Any amounts displayed should not be seen as an offer of finance or taken as financial advice. The interest rate, fees and loan term used in this calculation may not actually represent those available from lenders. Actual interest rates, fees and loan terms will vary per lender and are typically based on an assessment of your credit risk and responsible lending criteria. Any repayment amounts displayed are indicative only and have been calculated using several other indicative inputs. The interest rate used in this calculation is an arbitrary 14.95%, however exact interest rates vary per lender. The term of the loan used in this calculation is 48 month. Exact terms available vary per lender although options typically include 6, 12, 18, 24, 36, 48 and 60 months. This calculation also includes a typical mandatory fee charged by lenders. This is a one-off establishment fee of \$399.30. Typically, this fee can be paid upfront or, as in this calculation, be capitalised over the contract term, ie. included in the loan amount. This fee can vary per lender and other non-mandatory fees and charges may also apply. The total amount of repayments has been calculated by multiplying 208 weekly repayments (based on a 48 month term) by the weekly repayment amount of \$60.25 which equals \$12,531.52. This calculator does not consider any of your own personal circumstances and we strongly suggest you seek budgeting advice prior to committing to any loan contract. Responsible lending criteria and lender terms and conditions will likely apply to any finalised loan contract. Proof of security and/or vehicle insurance may also be required before proceeding.

Vehicle data updated 07 February 2026 12:23